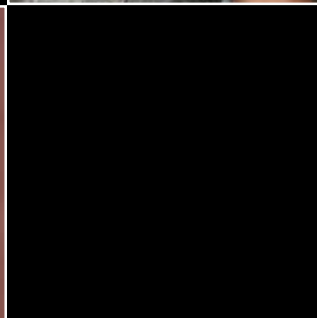
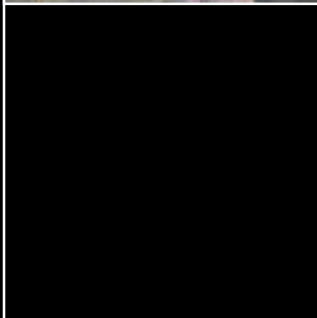
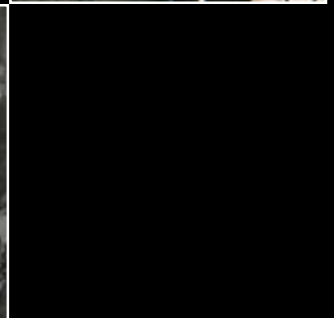
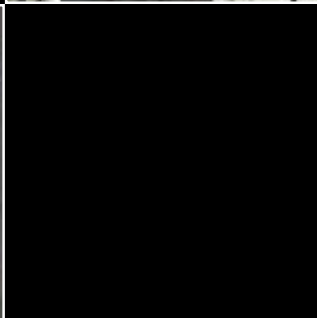
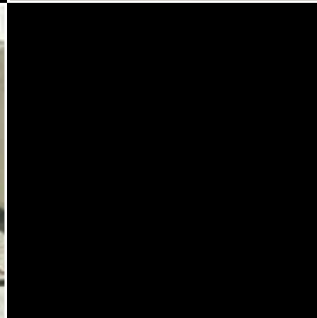


SAUEREISEN

SPECIALTY MATERIALS FOR SUBSTRATE REPAIR



Fast Curing and Durable Materials for Concrete Repair

As far as industrial infrastructure goes, there's no construction material more widely used than concrete. Where concrete is subjected to aggressive chemicals or excessive loads, deterioration threatens the continuity of operations. Structural integrity may even be compromised.

Sauereisen substrate repair materials and underlayments enable concrete repair to proceed rapidly. Our products are formulated to exhibit rapid strength development, a fast cure, and compatibility with other Sauereisen protective topcoats.



Underlayments & Concrete Repair

Address surface defects before adding a protective topcoat.

Filler Compounds

Fill irregularities, open joints, and voids.



Below Grade Water Barriers

Prevent underground water infiltration.

Grouts & Accessories

Grouts and patching materials for foundations and floors.



Specialty Cements Since 1899

Over a century ago, Sauereisen introduced its first ceramic-based adhesive cement for high temperature bonding applications. As the product line diversified, Sauereisen formulated many refractories, mortars, linings and polymer concretes to protect infrastructure in corrosive environments. Today our portfolio combines many organic and inorganic systems for new construction or restoration projects.



Engineered for Functionality

Sauereisen products aren't commodities. We offer solutions for the repair of standard Portland cement-based concrete. What differentiates our materials is a greater degree of durability, along with curing properties that enable quick return to service. Concrete repair products by Sauereisen are formulated to restore irregular surfaces marked by cracks, spalling, or exposed aggregate. Depending on service conditions, further topcoats may not be necessary. Where further protection is needed, the Sauereisen underlayments are assured to provide compatibility.

Comprehensive Solutions for Industrial Infrastructure

Made for Each Other

At Sauereisen, we understand the nuances of intercoat adhesion. We're also sensitive to the urgency of minimizing construction downtime. That's why we provide the security and convenience of single source supply when it comes to concrete repair.

Diverse Chemical-Resistant Systems

Based on the environmental considerations of your project, Sauereisen offers a wide variety of protective options. If corrosion is an issue, consider how our silicate, epoxy, vinylester or urethane linings might extend the life of your assets.

Multiple Industries Turn to Sauereisen

Sauereisen's materials for substrate repair are regularly combined with protective coatings in the Wastewater, Power, Chemical Processing, Food & Beverage, Steel, and Pulp & Paper industries. Typical applications include the following...



Municipal Wastewater

*Restoration of manholes.
Fortification of
treatment plants.*



Power Generation

*Protection of flue-gas
ducts and chimneys.*

Chemical Processing

*Repair of trenches.
Secondary containment.*



Food & Beverage

*Flooring in food plants,
breweries, and dairies.*



Pulp & Paper

*Re-pointing of mortar
joints in tile structures.*



Other Industries

*Steel, mining,
pharmaceutical and
manufacturing.*

UNDERLAYMENT AND REHABILITATION SELECTION GUIDE

Call us for specification development, or look to Sauereisen.com for data sheets on these and other specially engineered restoration and repair materials for Wastewater, Chemical, Power and other industries.

PRODUCT NAME	CHEMISTRY	INDUSTRY				GENERAL USE	METHOD OF APPLICATION
		W	C	P	O		
Underlayments/Concrete Repair							
RestoKrete Underlayment No. F-120	Portland-based	✓	✓	✓	✓	Restoration of structural integrity	Cast, trowel or gunite
RestoKrete Underlayment (Fast-Setting) No.F-120FS	Portland-based	✓	✓	✓	✓	Patching of concrete	Cast or trowel
RestoKrete Substrate Resurfacer No. F-121	Portland-based	✓				Restoration and resurfacing of concrete	Pumpable, straight-shot spray, rotary-spray or trowel
Fast Patch No. 149	Epoxy with aggregate		✓	✓	✓	Quick setting floor patch	Cast or trowel
Filler Compounds							
RestoKrete No. 208	Epoxy-modified cement	✓	✓		✓	Fills voids and restores concrete	Pumpable, straight-shot spray, rotary-spray or trowel
RestoKrete Filler Compound No. 209 & No.209FS	Epoxy-based	✓	✓	✓	✓	Fills small voids in concrete	Trowel or rubber float
RestoKrete Filler Compound (High-Build) No. 209HB	Lightweight epoxy	✓				Fills large voids in concrete	Rubber float
Urethane Filler Compound No. 309	Urethane	✓	✓		✓	Fills and seals irregularities in concrete	Trowel or rubber float
Universal Block Filler No. 509	Urethane	✓	✓	✓	✓	Fills and seals irregularities in concrete	Rubber float
Below Grade Water Barriers							
SewerSeal No. F-170	Calcium aluminate	✓				Barrier to withstand water infiltration and corrosion	Pumpable, straight-shot spray, rotary-spray or trowel
InstaPlug No. F-180	Hydraulic cement	✓				Sealing active water leaks	Easily applied by hand
H ₂ OPruf No. F-190	Portland-based polymer modified	✓		✓	✓	Prevents water seepage through substrate	Brush applied or spray
Hydroactive Polyurethane Grout No. F-370	Catalyzed hydrophobic urethane	✓			✓	Prevents water leakage through cracks and voids	Dual cartridge gun or pump
Grouts							
Grout No. F-100	Nonmetallic, Portland-based		✓	✓	✓	Non-shrinking, non-metallic machine setting grout	Pumpable or cast-in-place
Epoxy Grout No. F-150	Epoxy resin grout		✓	✓		Chemical resistant grout for pump pads and machinery	Pumpable or cast-in-place

RestoKrete™
© 2011 Sauereisen

INDUSTRIES KEY

W	Wastewater
C	Chemical
P	Power
O	Food & Beverage, Pulp & Paper and all other industries



SAUEREISEN

160 GAMMA DRIVE PITTSBURGH, PENNSYLVANIA 15238-2989 USA
 PHONE 412 963 0303 FAX 412 963 7620
www.sauereisen.com email: questions@sauereisen.com