

We Are
SAUEREISEN



What We Do

Sauereisen brings a century of experience in developing, manufacturing and marketing corrosion protection and specialty materials. We continue our tradition of innovation since 1899.

Our Mission

To deliver quality products and services which add value for the customer. We aim to exceed customer expectations and enhance stakeholder interests.





Our history goes back over a century. In 1899, C. Fred Sauereisen founded the Sauereisen Cements Company by formulating our first product, Insa-Lute Adhesive Cement. This bonding agent is still used around the globe for high temperature electrical assembly applications.

As development continued, Sauereisen Cements marketed another property inherent to its original core products—the property of chemical resistance. Many protective systems were formulated to preserve concrete and steel substrates from the threats of corrosion and other physical abuse. Specifications of Sauereisen materials became common for the preservation of infrastructure within power generation, wastewater, chemical, pulp & paper, steel and food and beverage facilities worldwide.

Today, Sauereisen maintains an international network of technical representatives in major cities throughout the world. Our manufacturing and warehouse facilities located in the United States, Latin America, Europe and the Pacific Rim provide worldwide product distribution.

Sauereisen's expert technical staff and material technologies provide a single source of proven solutions for over 100 years.

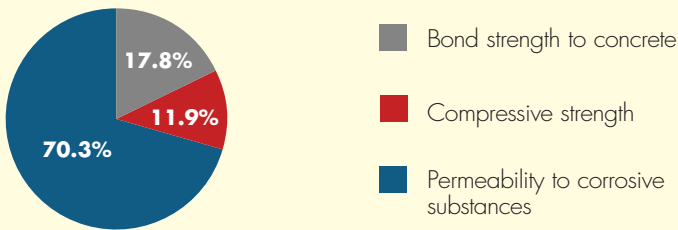


CORROSION AND PERMEABILITY EXPERTS

Sauereisen fielded an independent survey to industry engineers and facility owners to gain perspective on the importance of corrosion resistance and to permeability. Below are the primary findings as indicated by the respondents:

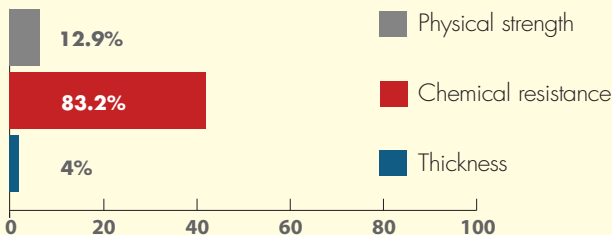
Permeability

What are the most important factors of a chemical resistant lining?



Chemical Resistance

Which qualities of protective linings are most important relative to the corrosion protection of infrastructure?



In recognizing the economic and environmental toll that corrosion exacts upon infrastructure around the world, Sauereisen is uniquely positioned to address the problem. Our organic and inorganic materials work together as an engineered system to prevent permeation.

CORE CORROSION INDUSTRIES

Sauereisen offers a comprehensive selection of corrosion-resistant materials for new construction and restoration applications. Our organic materials offer low permeability and withstand chemicals from both sides of the pH scale.

Similarly, our inorganic products offer superior resistance to the highest acid concentrations and temperatures through 2000°F (1093.3°C). All of our materials are tested in extreme conditions to ensure quality.

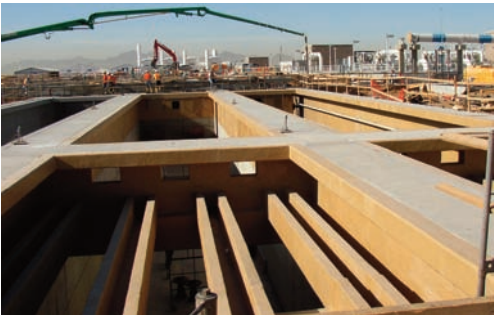
These extreme conditions consist of:

- Immersion conditions in a chemical processing or storage area
- Hot, abrasive and corrosive flue gas in a chimney or duct
- Splash and spill of chemicals in a secondary containment area
- Impact or physical abuse upon a floor

Generally, Sauereisen's materials enable longevity of infrastructure in many industries. Among our core corrosion industries are the following applications:



Our materials provide longevity for power plants.



Preserving wastewater infrastructure.

Power Generation

- | | | |
|--|---|--|
| • Chimney linings for generating stations that burn fossil fuels | • Scrubber modules and ducts common to the flue gas desulfurization (FGD) process | • Tanks and chutes used for the storage and delivery of chemicals and coal |
|--|---|--|

Municipal Wastewater

- | | | |
|---|--|---|
| • Protection against Microbiologically Induced Corrosion (MIC) common to the sewage environment | • Collection system structures such as manholes, wet wells and lift stations | • Treatment plant vessels such as clarifiers, grit chambers and digesters |
|---|--|---|

Chemical/Petrochemical Plants

- | | | |
|---|--------------------------|---|
| • Pump bases, tanks and trenches subject to continual acid exposure | • Foundations and floors | • Cat crackers and other processing areas at refineries |
|---|--------------------------|---|

ADDITIONAL APPLICATIONS

At Sauereisen, the applications of our products definitely qualify as diverse. In some industries, our materials may be applied plant-wide. Typically, areas where these applications are used is critical to the serviceability of major processes.

Food/Beverage/Pharmaceutical:

Our durable and chemical-resistant materials are suitable for brick, tile or concrete. Sauereisen formulations resist the fats, sugars and sanitizers that traumatize the floors of breweries, dairies and rendering plants.

Steel: Sauereisen's mortars and coatings are used extensively for the interior of pickle tanks and are found beneath Push/Pull pickle lines. Acid transfer infrastructure is also a common application. We even have materials for beneath heavy machinery.

Pulp & Paper: We offer mortars for failed joints in tile-lined structures. Alternatively, Sauereisen fiber-reinforced linings are specified to provide a monolithic lining over tile in many process liquor tanks.

Mining: For chemical exposure prevalent in facilities that use the solvent extraction/electrowinning (SXEW) process, Sauereisen materials offer protective solutions. Multiple materials are used for foundations, tanks and piers where precious metals are refined.



Process floor combines durability with a showroom like appearance.



Decades of service life in pulp and paper mills.



Castable materials
minimize down time

Multiple applications
for corrosive and
abrasive environments

Easy installation by trowel

Refractory applied
by gunite

Masonry placement
by brick laying or
tile setting

CORROSION RESISTANT MATERIALS

Sauereisen is...Credible.

Continual innovation enables Sauereisen to offer an expansive corrosion-resistant product line. Our materials are engineered to work either independently or as part of a fully integrated protection system.

Sauereisen offers solutions that tolerate the widest range of acids, alkalis, temperature ranges, and installation requirements.

We deliver technically sound recommendations since our formulations aren't limited to any single product chemistry or method of application.

- Coatings and Linings
 - > Epoxy, novolac epoxy, vinylester, urethane
- Flooring
 - > Self-leveling, slurries, & trowelable materials
- Polymer Concrete
 - > Multiple castable formulations
- Refractories
- Mortars, Grouts and Setting Beds

Call for your material recommendation.
412-963-0303

HIGH-TEMPERATURE CEMENTS

Sauereisen Cement is...the original high-temperature adhesive.

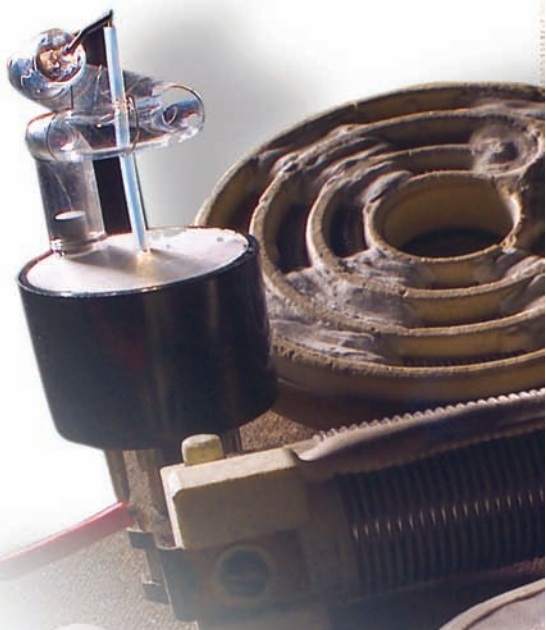
Our track record for specialty adhesives goes back to the founding of the company in 1899. Sauereisen cements are known for high electrical insulation, thermal conductivity and tolerance to extreme temperatures through 3000°F (1649°C).

Typical uses involve the bonding of metal, ceramics or glass. Sauereisen cements have earned a leading reputation for their applications within heating elements, resistors, thermocouples, igniters and specialty lamps.

Today, Sauereisen's line of ceramic-based cements includes several offerings that differ by their setting mechanism, thermal expansion rates, physical properties and handling characteristics. Customization of base formulations to facilitate automated production is common.



Sauereisen cements are available in paste or powder form.



SAUEREISEN'S LEGACY OF SERVICE

Sauereisen's legacy continues, as a multi-generational family business, the personal element of our enterprise remains strong. The extended family of Sauereisen colleagues prioritizes the collective values of integrity, respect, commitment, innovation and pursuit of excellence.

We incorporate creativity into our formulations, production and service. Through the decades, we have been recognized for revolutionary accomplishments in materials technology, application expertise and environmental preservation.

The Sauereisen legacy is furthered through ongoing interaction with diverse stakeholders in the Original Equipment Manufacturer (OEM), engineering, construction and facility management community. We aspire to deliver the highest level of specification consultation and jobsite technical assistance.

The Sauereisen network of representatives and distributors spans the globe and we aim to serve.

We are...Sauereisen.





SAUEREISEN

160 GAMMA DRIVE • PITTSBURGH, PA 15238-2989
TELEPHONE: 412-963-0303 • FAX: 412-963-7620

www.sauereisen.com