



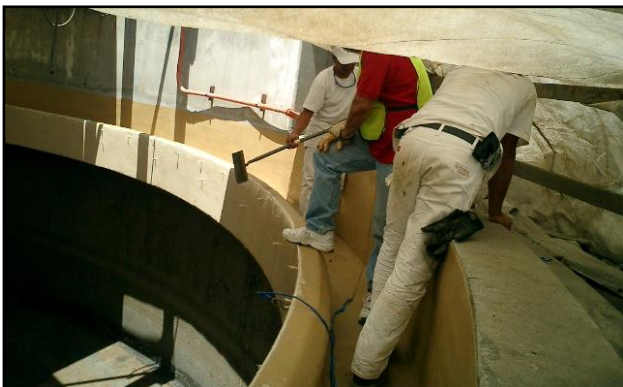
PROJECT PROFILE



Eroded and corroded trough wall following hydro-blast prior to rehabilitation.



View of completed walls protected with SewerGard 210G



Rehabilitated trough protected with SewerGard 210T and 210G top coat to ease cleaning and maintenance.

Project: Rehabilitation of Gravity Thickener Tank #1

Location: Sand Island WWTP – Honolulu, Hawaii

Owner: ENV – City and County of Honolulu

Applicator: Zelinsky Company

Sauereisen Representative: J.A. Crawford Company

Products:

- SubstrateResurfacer F-121
- ConoWeld Primer No. 501
- SewerGard 210T & 210G

Method of Application:

- SubstrateResurfacer F-121 – Trowel
- SewerGard No. 210T – Trowel
- SewerGard No. 210G – Airless Spray

Environment / Exposure:

Microbiologically induced corrosion and erosion from wastewater with elevated temperatures of Hawaiian climate.

Project Details:

- All concrete surfaces were blasted and resurfaced using SubstrateResurfacer F-121 to restore original grade and provide a uniform surface for the application SewerGard epoxy linings.
- In areas of severe corrosion and erosion, namely in the trough areas, F-121 was installed at up to 4" in thickness to restore grade.
- Following restoration and resurfacing, SewerGard No. 210T was installed in trough areas at a minimum 125-mil thickness and then top coated with 210G. The smooth 210G surface reduces debris and algae build-up and aides in cleaning efforts while providing superior abrasion resistance.
- Wall areas were protected with a 20-mil lining of 210G providing excellent corrosion protection.